

# St Joseph's Primary School

Primary Six

Curriculum 2022-23

Mrs Gorman & Mrs McCambridge



# Aims

- To give an overview of the Curriculum that your child will be following in P6.
- Schedules and P.E. times
- Homeworks and Reading Logs
- Communication
- Top tips to support your child.
- A.O.B.



# General Information

## Morning

- 8 – 8.45am Breakfast Club
- 8.45-55am – Enter through side door
- 8.55am – Class starts
- After 9.00am – marked late
- After 9.30am – missing for morning session
- Finish at 2:10pm
- Top of lane- Ms Kitt
- Back car park- Mrs Gartland



# General Information

PE Days Term One

- Monday IFA Coaching in Hall.

September/October:

- Thursday- Mrs Gartland (Miss Smyth)
- Friday- Ms Kitt

Thursday/Friday: Weather permitting and currently subject to change



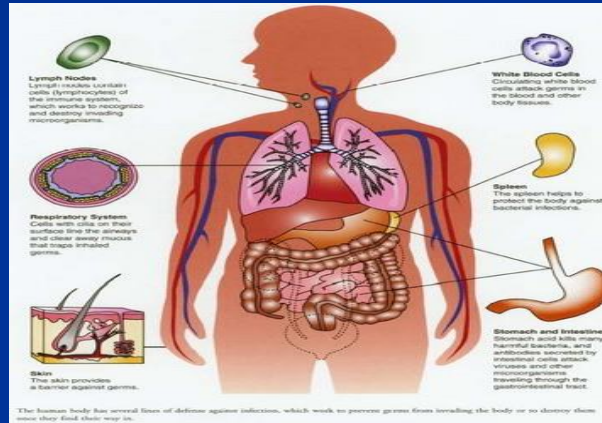
# Our Topics



Animals



Around the World



My Amazing Human Body



R,R,R



Egyptians

Egyptians

# Learning Areas

- Literacy
- Numeracy
- ICT
- Connected Learning (WAU, Music, Art, Drama)
- Physical Education
- Personal Development and Mutual Understanding
- Religion



# Reading

- Striving to develop a child's interest in reading.
- Shared Reading
- Guided Reading
- Independent Reading
- Developing comprehension skills
- Punctuation and Grammar
- Complete spelling programme
- Library Books - Variety of fiction/non-fiction



# Writing

- Procedural – write a procedure
- Report – a factual piece on a given subject
- Narrative – a creative story.
- Explanation – explaining how something works or a process.
- Recount – writing about an event that has happened.
- Exposition – persuasive content like a letter or argument.
- Poetry
- Free Writing





# Numeracy

- Number
- Measures
- Handling Data
- Shape and Space
- Problem Solving
- Investigations
- Mathematics



# Mathletics

- Online learning
- Children receive points for live mathletics and curriculum content activities
- More points awarded for curriculum content
- Can be tailored to suit individual needs of the child
- Mathlete of the month
- Keeping an eye on progress
- 40 minutes p/week – 7 – 9% increase annually



# Mental Maths

- Focus on using a wide range of 5 minute warm up activities, e.g. show me cards, squashy boxes
- Developing the **7 mental arithmetic strategies**
  - Counting on and back
  - Rounding and adjusting
  - Partitioning
  - Re-ordering
  - Inverse Operations
  - Using Factors\*
  - Using Equivalence

# ICT

- Integrated into the Curriculum areas.
- Pupils complete CCEA ICT tasks.
- iPads will allow improved curriculum integration and enhance learning.



# Reporting to Parents / Assessment

- Verbal reporting to parents in March
- PTE,PTM (NFER) P5 June
- Written Reports in June
- Weekly mental maths and spelling assessments.
- Eight weekly class assessments



# Pastoral Care

- Contact class teacher immediately by telephone appointment if there are any issues or concerns
- We want your children to feel safe and happy at all times.



# Homework

- Monday:
  - Weekly Homework Schedule/Spellings/Homework sheets posted on Google Classroom
  - Reading Book ( Will be informed through Seesaw of how long to keep this book).
- Complete work in Homework Books (Homework Book 1 & 2 on alternating weeks)
- Return books to school on Friday

